

NON-PROFIT ORG.
U.S. POSTAGE
PAID
BRISTOL, CT
PERMIT NO. 503



COMMUNITY | HEALTH | CARE

91 Northwest Drive, Plainville, CT 06062
888.793.3500 • WheelerHealth.org



LICENSURE AND ACCREDITATION
Connecticut Department of Children and Families
Connecticut Department of Education
Connecticut Department of Public Health
The Joint Commission
National Committee for Quality Assurance



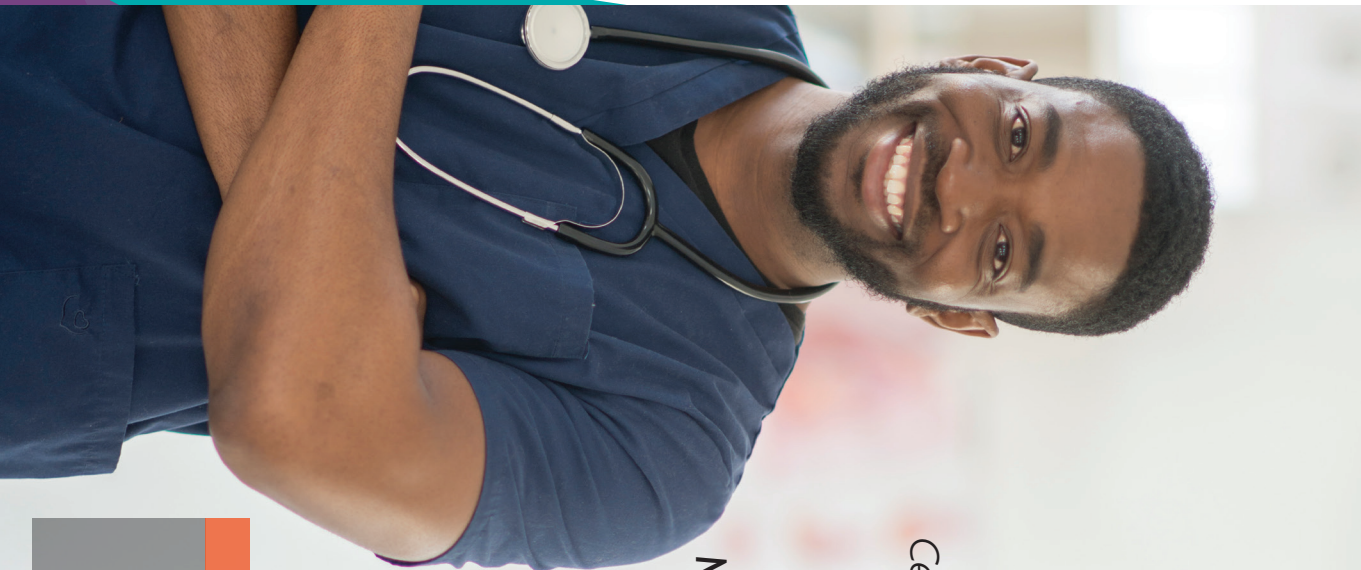
Wheeler

COMMUNITY | HEALTH | CARE

IMPACT

The difference
we make in our
communities

FALL 2022



Breaking Ground in Bristol

*Flagship Health Center
Construction Begins in
Centre Square, Downtown*

COMMUNITY

The Campaign for Bristol
Makes Measurable Strides

HEALTH

Enhanced Mental Health
Services for Youth

CARE

Foster Families Needed
in Waterbury

ALSO IN THIS ISSUE...

- Grants Support Services in Bristol
- Support for Walk With Me Program
- Federal Quality Recognition
- Golf Classic Grosses \$100,000



From l to r: State Representative Whit Betts (R-78); David Patrick, president, Downes Construction Company; State Representative Cara Pavalock-D'Amato (R-77); Mary Rodier, CPA, incoming chair, Wheeler Board of Trustees; Jim Moylan, outgoing chair, Wheeler Board of Trustees; Sabrina Trocchi, PhD, MPA, president and chief executive officer, Wheeler; Manisha Juthani, MD, commissioner, Connecticut Department of Public Health; Mayor Jeff Caggiano, City of Bristol; Justin Malley, executive director, Economic & Community Development, City of Bristol; and Todd Raymond, vice president of Facilities, Wheeler.

Wheeler Breaks Ground on One Hope Street, Bristol

About 100 state and local leaders, board members, donors, employees, and friends gathered on Thursday, September 29th at a groundbreaking ceremony for Wheeler's planned 46,000-square foot community health center and administrative headquarters at One Hope Street in downtown Bristol. The site is an approximate 1.3-acre lot between North Main and Hope streets.

"We are breaking ground not just on a building, but on what we provide for the City of Bristol and across the state," said Sabrina Trocchi, PhD, MPA, president and ceo of Wheeler. "And that is hope. Every day, in every Bristol school, we're giving Bristol students and their families hope that tomorrow will be better. In a year, when this incredible building is completed, we're giving the city hope for a prosperous downtown, an influx of professionals shopping and working downtown, and a better tomorrow. And in this time when there are so many stresses and fractures, through the services we provide, here in Bristol and in 90 percent of the state's cities and towns, we're helping people find hope in a healthier tomorrow."

The site will combine many of Wheeler's administrative departments with a consolidation of its two existing community health centers at 10 and 225 North Main Street. About 200 full- and part-time employees will work at the new building, which will become the organization's flagship location. It is Wheeler's first newly constructed facility since its original location in 1972.

Read more about fundraising progress for our new community health center on Page 2.

FACT: Children's Outpatient Services, Extended Day Treatment, EAP, and links with Bristol Hospital's Counseling Center were part of Wheeler's earliest history with the Bristol community.

To access an expanded version of this story and other stories in this issue, visit: **WheelerHealth.org/Impact** or access the page by scanning this QR code with your cell phone.



COMMUNITY

The Campaign for Bristol Makes Measurable Strides

Wheeler has reached 80 percent of its \$500,000 fundraising goal for its downtown Bristol flagship health center at One Hope Street, according to former board chair, Jim Moylan, and a committee of Wheeler Trustees who led this effort.

Announced in spring of 2022, the public campaign was launched with the support of an anonymous donor in Bristol and other local philanthropic investors. Funding for the entire health center project is made possible through a combination of loans, allocations from Wheeler's endowment, private giving, and public grants. The Wheeler Board of Trustees achieved 100 percent participation and reached its \$100,000 goal for members as part of this campaign.

"We couldn't be happier about the progress of our fundraising effort," said Sabrina Trocchi, PhD, MPA, president and chief executive officer, Wheeler. "We are extremely grateful for the generosity of so many with ties to the Bristol community and a steadfast commitment to serving residents of this city."



FACT(s): Wheeler's first school-based health center opened in Bristol in 2016. Today, centers are located in every public school in the city to help students with anxiety, depression, and other behavioral health issues, as well as access comprehensive health care through Wheeler's Family Health & Wellness Center.

COMMUNITY ROUNDUP

- Wheeler's **37th Annual Golf Classic**, presented by **Mutual of America Financial Group**, grossed a record-breaking **\$100,000** to support individuals and families in care through Wheeler's **Basic Needs Fund**.
- A **\$5,000** grant from the **Main Street Community Foundation** will help enhance Wheeler's **Walk with Me** program, including operational support for the program's **peer support specialist**.
- **Mary Rodier, CPA**, was named Wheeler's **new board chair**, succeeding **Jim Moylan** who served as board of trustees chair for **three** years.

THANKS TO ALL WHO SUPPORT HEALTH, RECOVERY, AND GROWTH IN BRISTOL!

HEALTH

Enhanced Mental Health Services for Youth

State and local legislators, community leaders, and others recently celebrated the launch of an intensive mental health outpatient pilot program for children and teens. The program is part of recently passed, comprehensive child mental health legislation through which Wheeler received \$650,000 to create and offer an intensive outpatient program for children and teens through its Waterbury community health center. State Representative Liz Linehan (D-103) was co-author of HB 5001, An Act Concerning Child Mental Health, and she is a champion of enhanced mental health services for youth in the Brass City area, including Cheshire.

"We are so grateful for the support of Representative Linehan and other members of the Connecticut General Assembly who recognize the value of providing high-quality, accessible mental health services for children and youth," said Sabrina Trocchi, PhD, MPA, president and chief executive officer, Wheeler. "During this period, especially, as children, adolescents, and families struggle to find their emotional footing following the worse phases of the pandemic and other challenges, our intensive outpatient services offer strengths-based solutions to help people recover and thrive."



L to r from Wheeler, Kim Holyst, director of behavioral health, and Sabrina Trocchi, president and chief executive officer; State Representative Liz Linehan (D-103); State Representative Tammy Nuccio (R-53); Amanda Pratte, site director, Wheeler Family Health & Wellness Center; and State Representative Gerald Reyes (D-75).

FACT: Wheeler's first Children's Outpatient program opened in 1973 at 91 Northwest Drive, Plainville.

HEALTH ROUNDUP

- Tied for the most awards in the state, **Wheeler received** six out of eight **Community Health Quality Recognition (CHQR) badges** from the **Health Resources and Services Administration (HRSA)** following a 2021 Uniform Data System (UDS) review. The badges recognize quality improvement achievements for access, quality, health equity, health information technology, and COVID-19 public health emergency response. In **nearly every case**, the awards received by **Wheeler** placed it in the **top one-third** of centers **nationally**.

CARE

Foster Care Program Serves Youth in Greater Waterbury

Wheeler provides Foster Care services to youth and families in Waterbury and eight surrounding towns. Funded by the Connecticut Department of Children and Families, Wheeler's program matches children and youth with loving foster homes and provides training, support, and a stipend for foster families.

"We are committed to serving youth and families in the Greater Waterbury community and collaborating with the many individuals and organizations in this region who work tirelessly on behalf of children," said Sharon Pendleton-Ponzani, LCSW, director, Wheeler Foster Care Services. "Our greatest need is to find stable, nurturing homes for youth ages 6 through 17."

Wheeler's foster families come from all walks of life. They provide a safe, supportive home environment for children in need. Foster parents may be married or single and rent or own their own home. They must have a stable income and transportation. Many foster parents have children, or have raised children, or others may work with children.

TOWNS SERVED: Beacon Falls, Middlebury, Naugatuck, Oxford, Prospect, Southbury, Waterbury, Wolcott, and Woodbury.



FACT: In Connecticut on any given day, there are more than 3,400 children in foster care and hundreds more who need loving homes. Most youth are over the age of 13.

CARE ROUNDUP

- **Teodoro Anderson Diaz, MS, MSW, LCSW, LADC**, vice president of family health and wellness center outpatient services, received a **Top Latino Leader** award at the **2022 National Latino Leadership Conference** of the National Diversity Council and the Council for Latino Workplace Equity.
- **Child and adolescent patients** at our Family Health & Wellness Centers received a **free backpack and school supplies**, thanks to the support of the **United Way of Central and Northeastern Connecticut**.
- **Patients** at all of Wheeler's community health centers have access to **fresh produce** through November, thanks to an ongoing **partnership** with **Holcomb Farm**.

PRESIDENT'S MESSAGE



COMMUNITY | HEALTH | CARE

We've spent much of this year looking forward . . . forward to continued emergence from the COVID-19 health crisis. Forward to the expansion of services for our most vulnerable citizens. Forward to the opening of a new community health center and flagship location in Bristol.

This issue of IMPACT reflects our focus on the future, starting first with a story about our Bristol community health center groundbreaking on One Hope Street—and an update on fundraising for this project—as well as an expression of our enduring gratitude to the individuals and organizations that are making this possible.

Our direction forward also includes new services that address emergent need, for example, the launch of new intensive outpatient services and serving foster families and youth in Waterbury, as well as strengthening peer support for our Walk With Me program designed for the LGBTQIA+ population and their loved ones. We celebrate and thank our organizational and community leaders, funders, and donors who champion our progress.

Thank you for supporting health, recovery, and growth in the lives of the individuals and families we serve. Thank you for helping us to move forward.

Sabrina Trocchi, PhD, MPA

Sabrina Trocchi, PhD, MPA
President and Chief Executive Officer

PLEDGE

YOU CAN MAKE A DIFFERENCE.

YOUR support, YOUR commitment, YOUR vision can change, and literally save, lives.

Yes! I want to support:

Bristol Family Health & Wellness Center.....\$ _____
Basic Needs Fund.....\$ _____
Basic Needs Fund, Northwest Village School.....\$ _____
Other\$ _____
Enclosed is my total gift of\$ _____

☐ Check Enclosed (Please make payable to Wheeler.)

Please charge my donation to: Visa MasterCard Discover AmEx

Name _____

Account Number _____

Exp. Date _____ Security Code _____

Signature _____

My gift is in memory of: _____

My gift is in honor of: _____

Please notify: _____

☐ My employer will match my contribution. I have enclosed a matching gift form.

☐ Please send me information about Planned Giving.

Mail using the enclosed envelope to:
Wheeler
Office of Philanthropic Giving
91 Northwest Drive
Plainville, CT 06062

Or scan this QR code with your cell phone to make a donation.

